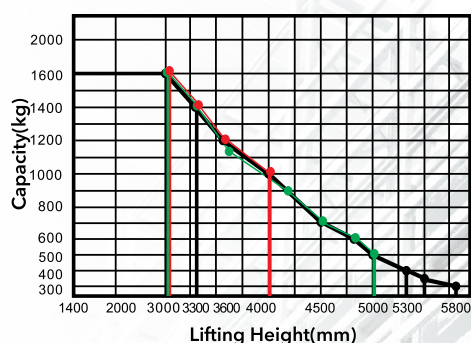


# CDD16-D930/950/350

## Forkover Electric Stacker

### Load Curve



- CDD16-950
- CDD16-D930
- CDD16-350

### Configuration and performance

- Electronic power steering system, light and low noise.
- Two-way magnetic valve, three drop speed mode.
- Drive unit floating bodies with patent design.
- AC Driving system, No carbon brush, free maintenance.
- Electromagnetic, regenerative braking system.
- Automatic lifting limit, proximity switch, long life.

### Safety

- Curve automatic deceleration devices, more safe.
- Vehicle decelerates automatically at higher position.
- Stepless speed control system, safe and quiet.
- Controller with Multiple automatic protection.
- Emergency reversing device/Emergency brake switch.
- High position automatic reduction device.

### Option

- Lithium battery



AC | EPS

Down mode at 3 speeds

Steering automatic deceleration

Truck automatically decelerates while at higher lifting position

Type	Lift height (mm)	Mast type	Outside width between legs (mm)	Inside width between legs (mm)
CDD16-D930	1400/2000/2500/3000/3300/3600/4000	Standard 2-Stage	550/600/650/685	180/230/280/315
CDD16-950	3700/3900/4200/4500/4700/5000	Full Free 3-Stage		
CDD16-350	5300/5500/5800	Full Free 3-Stage		



# CDD16-D930/950/350



Feature							
Model		CDD16		CDD16		CDD16	
Configuration No.		D930		950		350	
Type		Fork Over		Fork Over		Fork Over	
Mast type		Standard 2-Stage		Full free 3-Stage		Full free 3-Stage	
Load capacity	kg	1600		1600		1600	
Load center	mm	600		600		600	
Wheel base	mm	1325		1375		1375	
Operating type		Walkie/Stand On					
Wheels							
Wheels type		PU		PU		PU	
Wheel quantity Driving wheel/Balance wheel/Bearing wheel		1/2/4		1/2/4		1/2/4	
Dimension							
Standard lift height	mm	1400/2000/2500/3000/3300/3600/4000		3700/3900/4200/4500/4700/5000		5300/5500/5800	
Lowered fork height	mm	90		90		90	
Fork size(length/width/thickness)	mm	1150(1220)/185/55		1150(1220)/185/55		1150(1220)/185/55	
Overall length	mm	2050/2470		2105/2525		2105/2525	
Overall width	mm	856		957		957	
Max.extend height	mm	1900/2500/3000/3500/3800/4100/4500		4200/4400/4700/5000/5200/5500		5800/6000/6300	
Mast lowered height	mm	1185/1535/1765/1980/2135/2335/2500		1800/1900/1985/2085/2135/2235		2520/2590/2690	
Min.Turning radius	mm	1580/1990		1595/2010		1595/2010	
Min.Aisle width for pallets 800×1200	mm	2180/2580		2230/2625		2230/2625	
Min.Aisle width for pallets 1000×1200	mm	2210/2600		2260/2650		2260/2650	
MIn.ground clearance	mm	30		30		30	
Performance							
Travel speed,laden/unladed	km/h	6/6		6/6		6/6	
Lift speed,laden/unladed	mm/s	130/180		130/180		130/180	
Lowering speed,laden/unladed	mm/s	100/230		100/160		100/160	
Gradeability,laden/unladed	%	6/8		6/8		6/8	
Electrical configuration							
Drive motor/Lift motor/Steering motor	kW	AC1.5/DC3/DC0.15		AC1.5/DC3/DC0.15		AC1.5/DC3/DC0.15	
Brake		Electromagnetic/Regenerative					
Weight		Lead-acid battery	Lithium battery (Optional)	Lead-acid battery	Lithium battery (Optional)	Lead-acid battery	Lithium battery (Optional)
Battery voltage/Battery capacity	V/Ah	24/280	24/200	24/280	24/200	24/280	24/200
Controller		ZAPI	ZAPI	ZAPI	ZAPI	ZAPI	ZAPI
Battery weight	kg	235	99	235	99	235	99
Service weight with battery	kg	1213	1109	1585	1388	1649	1468

\* Details of specifications and equipment are based on information available at time of printing and may change without notice.

